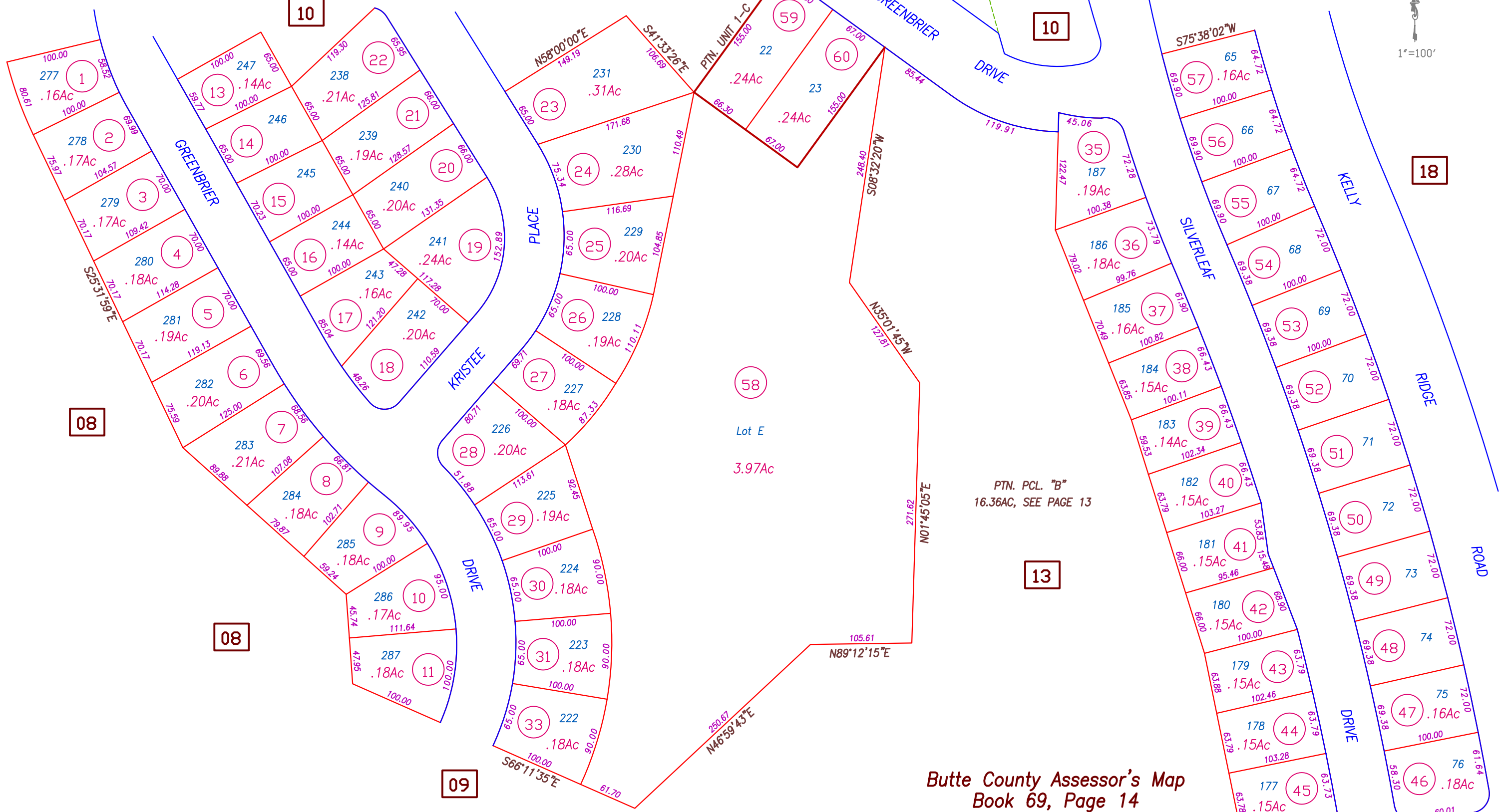


PTN. E. 1/2 SEC. 1 & E. 1/2 SEC. 12, T.19N. R.4E. M.D.B.&M.



08

08

10

09

10

13

18

58

Lot E

3.97Ac

PTN. PCL. "B"
16.36AC, SEE PAGE 13

Butte County Assessor's Map
Book 69, Page 14

NOTE: These parcels are for assessment purposes only and may not constitute legal parcels.

KELLY RIDGE ESTATES UNIT 1, 38 M.O.R. 5/10, 10-30-1970

CREATED BY	DB	CREATED ON	9-25-2001
REVISED BY	DB	REVISED ON	9-25-2001
		EFFECTIVE	2002-03 ROLL
Previous Book 34, Portion Of Page 61			
Compiled By The Butte County Assessor's Office			